

School bag Collection

2020 Collection



comfort
high quality
best prices
from Europe.



BELMIL TEAM COMPANY OVERVIEW



HISTORY

The company was established in 1965 as a family business. In the beginning it was manufacturing leather belts but later as new business opportunities arose the firm started producing bags.

Today the company is comprised of two parts: BKG, which produces sport and promotional bags, while Belmil Team is specialized for school bags with its own brand called "Belmil".



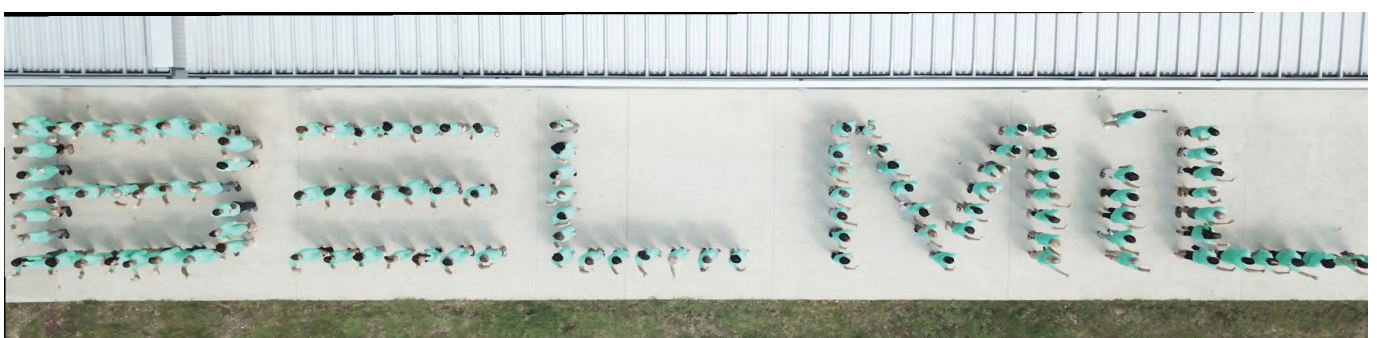
LOCATION

The company is located in Serbia, in Ada nearby the Hungarian border.

With its own production sites and warehouses, the firm is situated on more than 10,000 m² and employs over 200 people. A new production site and a warehouse have been recently added to the existing facilities. With more than 5.500 trees we contribute to fresh air every day.

KEY TO SUCCEES

- Offering the best prices, high quality and decades of expertise
- Learning from customer and market feedback
- Working with modern machines and highly skilled employees
- Relying on large raw material base
- Putting emphasis on management and employee training
- Offering high flexibility towards our clients in terms of order handling and project implementation
- Focusing on long term partnership with suppliers and clients on the basis of mutual satisfaction and trust.





PRODUCTION TECHNOLOGIES

The company's production sites are equipped with modern machinery, skilled and experienced workforce and sophisticated production management tools that make us competitive on the market.

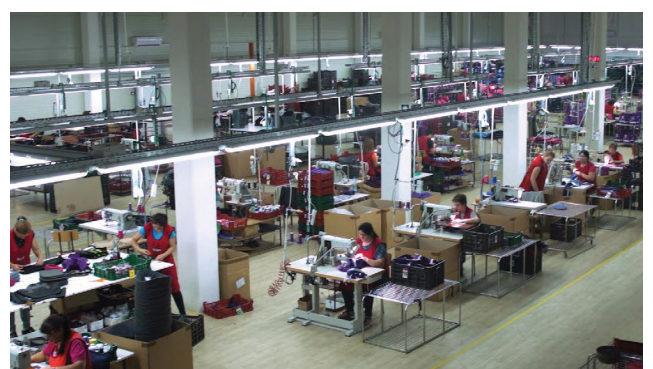
Our design department offers a wide range of implementation solutions including:

- Sublimation printing
- Screen printing and Hot transfer
- Embroidery and Application
- 3D rubber badge production, etc.

PRODUCTION LINE

- School bags and related accessories
- Sport bags
- Backpacks
- Laptop bags
- Promotional bags

More information at www.belmil.com



ERGONOMICS RECOMMENDED BY SPECIALISTS



TESTING

Belmil schoolbags were tested by doctors and physiotherapists with the assistance of 12 children. The factors examined were:

- anatomical build-up,
- friendly body-fitting and
- ease of wearing.

PARTICIPANTS

Participants (8 girls and 4 boys) were pupils of primary school (aged 6-10), except for a 12-year-old boy who is considered as over-aged. Their height ranged between 112 and 145 cm, whereas their weight was between 21 and 37 kg. The weight load varied from 4 to 7 kg.

According to the replies the following rating can be concluded:

- excellent: in 9 cases;
- good: in 2 cases;
- satisfactory: 1 case (in the case of the 12-year-old boy is over-aged)

RESULT

Belmil schoolbags meet the design requirements as well as they are outstanding in every respect – anatomically, biomechanically and orthopedically. Their forms reduce the burden on shoulders and backbone; the child did not find the carried load heavy. They felt that the shoulder-straps and the back support were comfortable to wear. The effect of belt-strap proved to be beneficial as it hindered the bag from moving all the time whereupon the load distribution on the lumbar vertebra is optimal. The character that the back part of the schoolbag can be adjusted at several points has also been emphasised that helps the schoolbag to be fitted completely and perfectly to the person. During testing, the Belmil schoolbag did not change the child's posture in 11 cases, while in one case it improved the pupil's loose build. The examination was carried out by Prof. Tamás Mészáros MD, university professor of the Orthopaedic Department of Szegeged University.





ENDLESS VARIATION OF DESIGN



DETAILED APPLIATIONS



SEQUINS



“GLOW IN DARK”
DESIGNS 

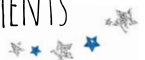


REFLECTIVE DESIGN
ELEMENTS



BEAUTIFUL PRINTS
ON SEQUINS



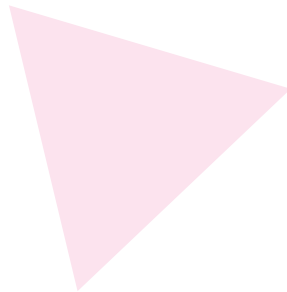
SPARKLING AND
GLITTER ELEMENTS 



BRIGHT, COLORFUL
SUBLIMATION PRINTS






3D MOTIVES




BELMIL ACCESSORIES

REMOVABLE CHEST STRAP (334)

| | | | |
|-----------|--------------------------------------|--|---|
| Dimension | max. lenght: 27.5 cm, width: 2 cm |  |  |
| Closure | button | | |
| Colors | Black, Blue Pink, Purple |  | |

RAINCOVER (405-13)

| | | | |
|----------|-------------------------------|---------------------------|--|
| Material | Polyester, water repellent | <i>ONE SIZE FITS ALL*</i> |  |
| Color | Fluorescent Yellow | | |

**(Except trolley)*

PENCIL CASES (EMPTY)

335-74/72
Square Pencil
case



14x20.5x3.5 cm

335-79
Rectangular
Pencil case



22x10x6 cm

335-78
Pencil
pouch



8x20x7.5 cm

335-82
Hard Shell
Pencil case



23x11x4 cm

GYM BAG (336-91)

| | | | | |
|-----------|-----------|---|--|---|
| Material | Polyester |  |  |  |
| Dimension | 43x45 cm | | | |

BELMIL ACCESSORIES

PINS

Soccer sport



Football



Like a Boss



Super Duper



Flags



Smile



Yay



Love girl



Drama Llama



Paris



Flamingo



OMG



PINS - Can be Purchased separately





MINI-FIT 405-33

User age 6-8
Dimensions H 36 L 28 W 19 cm
Extra Reflective Keychain

Weight 750-800 g
Material Polyester, waterproof
Guarantee 2 years
Volume 17 L



SPACIOUS



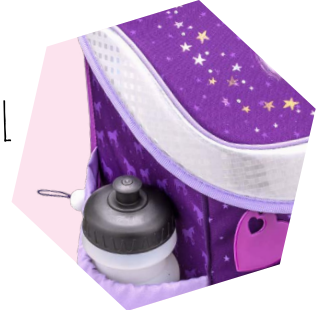
“MINI-FIT” FOR PRESCHOOL TO SECOND GRADE

This model is ideally suited for children from preschool age to second grade. Its small size is specifically designed for this age group freeing children from unnecessary burden. It weighs only 750-800 g, so the burden on small children is minimized. Made of high quality, strong and waterproof materials.



EASY ACCESS TO
PENCIL CASE

UP TO 0,7L



STORAGE

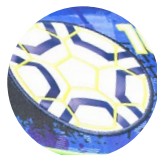
It features smartly divided compartments that help children organize their school supplies. There are two large inner compartments. All size of notebooks and books fit perfectly. Water bottle (up to 0.7 L) and umbrella can be easily packed in side pockets.



Print



Glitter



Embroidery



Glow in the dark



Rubber Badge



*"My favourite animals are butterflies. They are so beautiful, so is this bag!"
(Dori)*



DURABILITY

Reinforcements from all sides and the strong bottom part also enhance the stability and durability. The bottom part has some additional functions as well: it ensures that the bag stays in the same position, prevents from getting dirty and keeps the content dry even during rainy weather.



ERGONOMICS

Ergonomic shape and breathable back padding make sure that the pressure on children's back is minimized. Shoulder straps are well cushioned and adjustable, so comfortable everyday-wear is ensured. Added chest strap ensures the optimal load distribution. Recommended by Prof. Dr. Mészáros Tamás from the Orthopedic Department of Szeged University, Hungary.



SAFETY

With Belmil school bag safety is guaranteed even if it gets too dark: carefully placed reflective tapes on all sides, a strong and an easy-to-use metal lock with reflective feature ensure high visibility at night.



MINI-FIT

405-33



✿ Bunny
★ ✨ ★ ✨



✿ Cute Caty
★ ✨ ★ ✨



✿ Butterfly Jeans
★ ✨ ★ ✨



✿ Flamingo
★ ✨ ★ ✨



✿ Heart
★ ✨ ★ ✨

MINI-FIT

405-33



★ You are Magical
★ ★ ★ ★



★ Sweet Dreams
★ ★ ★ ★



★ Shine Like a Star
★ ★ ★ ★

MINI-FIT

405-33



Racing Sport



Spider



Soccer Sport



Space 



Sky Fighter


MINI-FIT

405-33



Wolf 



World of Dinosaurs 



Wild Jaguar



User age

6-9

Dimensions

H 36 L 32 W 19 cm

Weight

860-950 g

Material

Polyester, waterproof

Guarantee

2 years

Extra

Reflektiv Keychain

Volume

19 L

CLASSY 403-13



Glitter
☆☆☆☆



Embroidery



Rubber
Badge



Print



Glow in
the dark



STORAGE

It features smartly divided compartments that help children organize their school supplies. Its interior desing has three large compartments. All size of notebook and book fit perfectly. Water bottle (up to 0.7 L) and umbrella can be easily packed in side pockets



UP TO 0,7L



ERGONOMICS



Ergonomic shape and breathable back padding make sure that the pressure on children's back is minimized. Shoulder straps are also well cushioned and adjustable, so comfortable everyday-wear is ensured. Optionally, an adjustable chest strap csan be purchased to enhance ergonomics. Recommended by Prof. Dr. Mészáros Tamás from the Orthopedic Department of Szegeged University, Hungary



DURABILITY

Reinforcements from all sides and the strong bottom part also enhance the stability and durability. The bottom part has some additional functions as well: it ensures that the bag stays in the same position, prevents from getting dirt and keep the content dry even during rainy weather.



REFLECTIVE
ELEMENTS

COMPLEMENTARY
AVAILABLE



EXTRA FEATURES

On the cover there are various handles with different purposes. One handle has rubber cover due to which kids can easily and comfortably carry the bag in hands too. The other handle behind is for hanging the bag in the classroom.

SAFETY

With Belmil school bag safety is guaranteed even if it gets too dark: carefully places reflective tapes on all sides, a strong and an easy-to-use metal lock with reflective feature ensure high visibility at night.



CLASSY

403-13



Horse



Little Friends



Ballerina



Llama



Heart



Meow Caty

CLASSY

403-13



Love



Spring Time



Shiny Butterfly



Unicorn



Sweet Dreams



Sweet Puppy

CLASSY

403-13



CLASSY

403-13



Flamingo Paradise



Floral



Shine Like a Star



Elegant



Trendy Love

CLASSY

403-13



Basketball



Football Player



Hockey



Galaxy War



Racing Car

CLASSY

403-13

403-13

336-91



335-74

335-78

Pirate Ship

403-13

336-91



335-74

335-78

Sky Fighter

403-13

336-91



335-74

335-78

Speed Car

403-13

336-91



335-74

335-78

Spider

403-13

336-91



335-74

335-78

Street Racing Green

CLASSY

403-13

403-13

336-91



335-78

335-74

Wild Tiger

403-13

336-91



335-78

335-74

Dino

403-13

336-91



335-78

335-74

Speed Racing

403-13

336-91



335-78

335-74

Red-Blue Football

403-13

336-91



335-78

335-74

Racing

403-13

336-91



335-78

335-74

Robotics

CLASSY

403-13



Camouflage



Military



Wolf 



Bricks



Tyrannosaurus Rex

CUSTOMIZE-ME

404-20



ERGONOMICS

“Customize-me” weighs only 1100 g and made of high quality, strong and waterproof materials. Its “customize me” feature allows the user to adjust the bag to specific heights optimizing load distribution. Ergonomic shape and breathable back padding make sure that the pressure on children’s back is minimized. Shoulder straps are also well cushioned and adjustable, so comfortable everyday wear is ensured. Recommended by Prof. Dr. Mészáros Tamás from the Orthopedic Department of Szeged University, Hungary.

CHEST AND HIP BELT FOR OPTIMAL LOAD DISTRIBUTION



CUSTOMIZE TO HEIGHT!
S-M-L-XL-XXL



EXTRAS

The cover features two separate handles, each designed for a different purpose: a rubber handle serving a safe and comfortable grip in children’s little hands, and another one which is used to hang the bag in a locker or a wall hanger.

DURABILITY

Reinforcements on all sides and a strong bottom part enhance stability and durability. The bottom part has some additional function as well: it ensures the bag stays in the same position and prevents it from getting dirty.

| | |
|------------------|-----------------------|
| User age | 6-10 |
| Dimension | H 37 L 31 W 17 cm |
| Weight | 1085-1100 g |
| Material | Polyester, waterproof |
| Guarantee | 2 years |
| Extra | Reflective Keychain |
| Volume | 19 L |



Print



Glitter



Embroidery



Glow in the dark



Rubber Badge





*"It feels comfortable
Mom! Look! I can attach
the bubble all alone!"
(Dori)*

SAFETY

With Belmil school bag safety is guaranteed even if it gets too dark: carefully places reflective tapes on all sides, a strong and an easy-to-use metal lock with reflective feature ensure high visibility at night.

SPACIOUS INNER COMPARTMENTS

It features smartly divided compartments that help children organize their school supplies. Textbooks and notebooks of all sizes fit perfectly. This bag has an expandable front pocket that gives additional room for storing. Water bottle can be easily packed in side pockets (up to 0,7 L). If pockets are not used, can be fixed with Velcro giving the bag a more slim look.

REFLECTIVE
ELEMENTS



EXPANDABLE FRONT
POCKET



UP TO 0,7L



CUSTOMIZE-ME

404-20



✦ Elegant
★ ★ ★ ★



Floral



✦ Fairy
★ ★ ★ ★



✦ Unicorn Dreams
★ ★ ★ ★



✦ Mermaid
★ ★ ★ ★

CUSTOMIZE-ME

404-20



Astronaut in Galaxy 



Dino Triceratops



Player 10



Speed Racing



Super Speed



SPORTY 404-5



User age

6-10

Dimensions

H 38 L 32 W 21 cm

Weight

950-1000 g

Material

Polyester, waterproof

Guarantee

2 years

Extra

Reflective Keychain

Volume

22 L



Print



Rubber
Badge



Embroidery



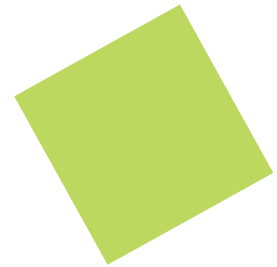
Glitter




ERGONOMICS



Ergonomic shape and breathable back padding make sure that the pressure on children's back is minimized. Shoulder straps are also well cushioned and adjustable, so comfortable everyday wear is ensured. Recommended by Prof. Dr. Mészáros Tamás from the Orthopedic Department of Szegeged University, Hungary.



UP TO 0,7L



EXTRA SPACE



SPACIOUS INNER COMPARTMENTS

It features smartly divided compartments that help children organize their school supplies. All sizes of notebooks and books fit perfectly. Side pockets can be easily transformed to water bottle holder by putting the pocket cover behind the bottle (up to 0,7 L).

DURABILITY

Reinforcements on all sides and a strong bottom part enhance stability and durability. The bottom part has some additional functions as well: it ensures the bag stays in the same position, prevents from getting dirty and keeps the content dry even during rainy weather.

SAFETY

With Belmil school bag safety is guaranteed even if it gets too dark: carefully places reflective tapes on all sides, a strong and an easy-to-use metal lock with reflective feature ensure high visibility at night.



SPORTY

404-5



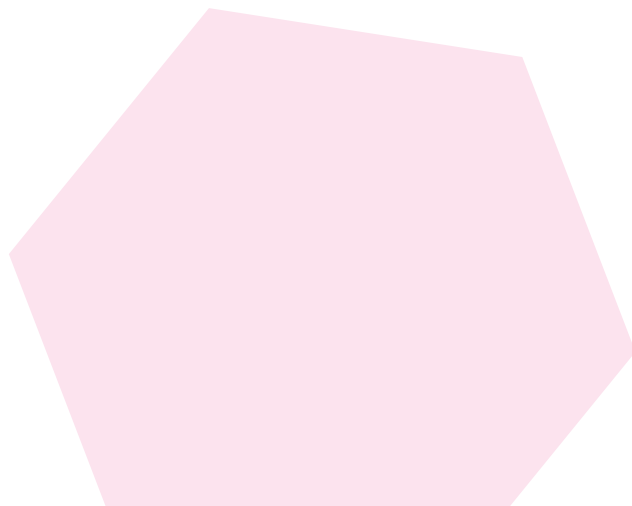
🦋 Dreams of Butterfly
★☆☆



🌸 Flower Mania
★☆☆



Girl Power



SPORTY

404-5



✿ Pinky Unicorn
★ ✿ ✿ ✿



Pussycat



✿ Sweet Life
★ ✿ ✿ ✿



SPORTY 404-5



Dinosaur



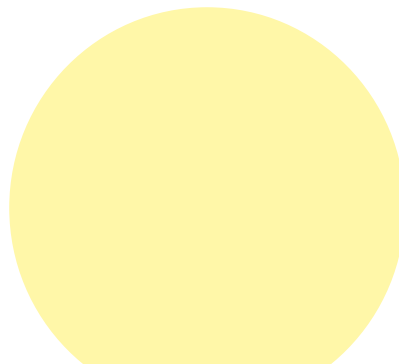
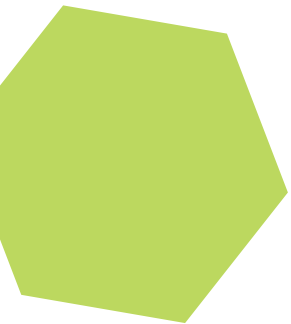
Mountain Wolf



Knight



Racing



SPORTY 404-5



Red-Blue Football



Speed Hunter



Treasure Island





CUBE 405-47



User age

6-10

Dimensions

H 37 L 30 W 24 cm

Weight

1000-1025 g

Material

Polyester, waterproof

Guarantee

2 years

Volume

16.5 L



Application



Print



Glitter
★ ★ ★ ★



Rubber
Badge

UP TO
0.7 L



THERMO POCKET FOR
LUNCH BOX



REMOVABLE
HIP BELT



EASY TO
ORGANIZE!



EASY TO OPEN



REMOVABLE
HIP BELT



NEW MAGNETIC LOCKING SYSTEM

This model features the new, magnetic locking system. Thanks to the strong magnets, the opening and closing get very easy and fun! Perfect combination of functionality, safety and playfulness: Kids will definitely love it!

ERGONOMICS

Ergonomic shape and breathable back padding make sure that the pressure on children's back is minimized. Shoulder straps are also well cushioned and adjustable, so comfortable everyday wear is ensured. Hip belts are designed to enhance load stabilization. When it's not used, it can be easily removed.

SPACIOUS INNER COMPARTMENTS

There are three inner book dividers that help children organise their schoolbooks. Textbooks and notebooks of all sizes fit perfectly. Water bottle can be easily packed in side pockets (up to 0.7 L). Front pocket can accommodate pencil case or lunch box.

CHEST STRAP

The bag is equipped with an adjustable chest strap for optimal load distribution. It is especially important when riding bicycle or running as it prevents the bag from sliding off from children's shoulders.

CUBE

405-47



Happy Butterfly



Pink Ballerina



Purple Magic Forest



Silver Love



My Magic Horse

CUBE

405-47



Fast Forward




Police Investigation



Soccer



Wolf Shadow 



Spaceman

MISTER & MISSY

405-30



User age 6-10

Weight 1040-1100 g

Dimensions H 37 L 32 W 19 cm

Material Polyester, waterproof

Extra Reflective Keychain

Guarantee 2 years

Volume 20 L



LIGHTWEIGHT AND STRONG

It features smartly divided compartments that help children organize their school supplies. Two large compartments and one medium zipper pocket give plenty room for storage. Textbooks and notebooks of all sizes fit perfectly. This bag has an expandable front pocket that gives additional room for storing. Water bottle (up to 0.7 L), umbrella or similar items can be stored in side pockets which are equipped with zippers.

+ COMPLEMENTARY CHEST BELT



EASY-TO-USE MAGNETIC BUCKLE



UP TO 0.7 L



EXTRA STORAGE



NEW MAGNETIC LOCKING SYSTEM

This model features the new, GermanFid-lock locking system. Thanks to the strong magnets, it can be opened with a simple half turn and it closes automatically. Perfect combination of functionality, safety and playfulness: Kids will definitely love it!



Print



Glitter



Embroidery



Rubber Badge



*"I'm 9 years old, and we have to carry so much stuff! But in this bag everything fits!"
(Mate)*



DURABILITY

Reinforcements on all sides and a strong bottom part enhance stability and durability. The bottom part has some additional functions as well: it ensures the bag stays in the same position and prevents it from getting dirty.



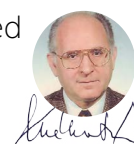
ERGONOMICS

Ergonomic shape and breathable back padding make sure that the pressure on children's back is minimized. Shoulder straps are also well cushioned and adjustable, so comfortable everyday wear is ensured. What's more, detachable chest straps can be purchased to enhance stability of the bag. Recommended by Prof. Dr. Mészáros Tamás from Szeged University, Hungary.



SAFETY

With Belmil school bag safety is guaranteed even if it gets too dark: carefully placed reflective materials on all sides ensure high visibility at night.



MISTER & MISSY

405-30



MISTER & MISSY

405-30



Dragon



Super Speed Yellow



Player 10



Spaceship



Speed



Firetruck

User age

6-9

Dimensions

H 37 L 30.5 W 19 cm

Weight

955-1060 g

Material

Polyester, waterproof

Guarantee

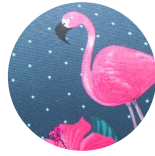

2 years

Extra

Timetable

Volume

19 L

**COMPACT
405-41****Print****Glitter****Rubber
Badge****Glow in
the dark** **COMPACT STORAGE**

It features smartly divided inner compartments that help children organize their school supplies. There are three separate compartments dedicated to storing textbooks and notebooks of all sizes. Two smaller pockets and a zipper pocket provide extra storage for mobile phone and smaller items, such as tickets and keys. Top lid has timetable holder. Front pocket is designed to store pencil case or lunch box. Side pockets with elastic straps accommodate water bottle (up to 0.7 L) and umbrella.

UP TO 0,7L

REFLECTIVE
MAGNETIC BUCKLE**MAGNETIC LOCK**

This model features the German Fidlock locking system. Thanks to the strong magnets, it can be opened with a simple half turn and it closes automatically. Perfect combination of functionality, safety and playfulness: Kids will definitely love it!



*" I want this bag Mom!
I love horses! It reminds
me of my horse, Silver"
(Mia)*



DURABILITY

Reinforcements from all sides and the strong bottom part also enhance the stability and durability. The bottom part has some additional functions as well: it ensures that the bag stays in the same position, prevents from getting dirty and keeps the content dry even during rainy weather.

ERGONOMICS



Ergonomic shape and breathable back padding make sure that the pressure on children's back is minimized. Shoulder straps are well cushioned and adjustable, so comfortable everyday-wear is ensured. Added chest strap ensures the optimal load distribution. This feature is especially important when riding bicycle or running.

SAFETY

With Belmil school bag safety is guaranteed even if it gets too dark: carefully placed reflective materials on all sides ensure high visibility at night.



COMPACT

405-41



Animal Forest-Foxy
★☆☆☆



Butterfly Jeans
★☆☆☆



Dancing
★☆☆☆



Horse Purple
★☆☆☆



Little Friend, Puppy
★☆☆☆



Dolphin
★☆☆☆

COMPACT

405-41



✿ Koala
★ ★ ★ ★



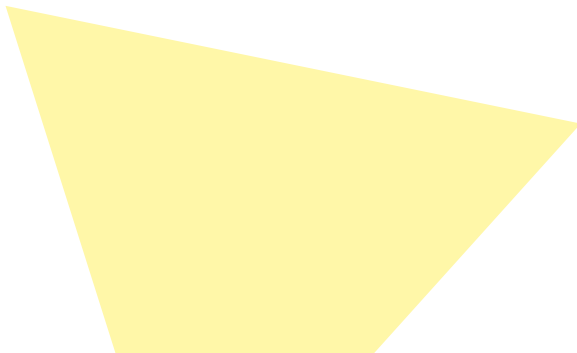
✿ Flamingo Paradise
★ ★ ★ ★



✿ Pussycat Love
★ ★ ★ ★



✿ Trendy Love
★ ★ ★ ★



COMPACT

405-41



Motocross



Play Football



Police Car



Shark 



Space 



Street Racing

COMPACT

405-41




Wild Jaguar



Wolf



World of Dinosaurs 





COOL BAG 405-42



User age

6-10

Dimensions

H 36 L 31 W 23 cm

Weight

1130-1220 g

Material

Polyester, waterproof

Guarantee

2 years

Volume

19 L



Sequin



Print




Glitter



Rubber
Badge



Glow in
the dark 



LUNCH BOX



UP TO 0.7 L



EASY TO ORGANIZE!



EASY TO OPEN



NEW MAGNETIC LOCKING SYSTEM

"Cool Bag" features the German Fidlock locking system. Thanks to the strong magnets, it can be opened with a simple half turn and it closes automatically. Perfect combination of functionality, safety and playfulness: Kids will definitely love it!



REMOVABLE HIP BELT

ERGONOMICS

It features a chest strap and a hip belt ensuring that load is appropriately stabilized on children's back. It is especially important when riding bicycle or running. If the hip belt is not used, it can be easily removed at any time.



SPACIOUS INNER COMPARTMENTS

Smartly divided inner compartments help children organize their school supplies. There are separate compartments dedicated to textbooks and notebooks of all sizes. Two zipper pockets help store smaller items, such as tickets and keys, easily and safely. A mobile holder is also added. It has additional room for storing pencil case as well. The front pocket serves easy access to lunch box. Side pockets can accommodate water bottle (up to 0.7 L) and umbrella.

COOL BAG

405-42



Blue Riding Horse



Jeans Heart



Magical World



Patch Mania



Purple Butterfly



Shine Like a Star

COOL BAG

405-42





STURDY 338-82



User age

6-10

Dimensions

H 38 L 35 W 19 cm

Weight

800-840 g

Material

Polyester, waterproof

Guarantee

1 year

Volume

22 L



HARD SHELL CONSTRUCTION

"Sturdy" school bag is designed for school children aged 6-10. Its front panel is made of hard shell, which gives a neat look and helps organize school utensils more easily. When the bag is opened - thanks to its special construction; it remains open allowing kids to comfortably pack and organize their things.



THANKS TO HARD SHELL EVERYTHING IS IN ORDER



ADDED CHEST BELT AND REMOVABLE HIP BELT FOR OPTIMIZED LOAD DISTRIBUTION



INNER COMPARTMENTS

There are three main inner dividers for schoolbooks, notebooks and other items, such as pencil case. A padded mobile holder is also added. A zipper, medium sized pocket can store keys, smaller notebooks and other items. Bulky books can be stored separately in the second larger compartment enhancing neat organization. Two side pockets can store water bottle and umbrella.

DURABILITY

Reinforcements on all sides and five buttons enhance stability and durability. The bottom part has some additional functions as well: it ensures the bag stays in the same position and prevents it from getting dirty.

ERGONOMICS

Ergonomic shape and breathable back padding make sure that the pressure on children's back is minimized. Shoulder straps are also well cushioned and adjustable, so comfortable everyday wear is ensured.

STURDY

338-82

338-82



335-82



Floral

338-82



335-82



Paradise

338-82



335-82



Galaxy

338-82



335-82



Build it

338-82



335-82



Racing

338-82



335-82



Sport





ROCKY

338-78



User age

6-10

Dimensions

H 39 L 27 W 17 cm

Weight

760-800 g

Material

Polyester

Guarantee

1 year

Volume

14 L



Print



Application



Sparkly
detail



COMFORT

Ergonomic shape and breathable back padding make sure that the pressure on children's back is minimized. Adjustable, cushioned shoulder straps further enhance everyday comfort.



REMOVABLE
HIP BELT



HARD BOTTOM-
STABILITY AND DURABILITY



PADDLED MOBILE
HOLDER



NOT ONLY FOR SCHOOL

"Rocky" weighs only 760-800 g and made of high quality, strong and water-proof materials. This model can be a good choice for school, travel and outdoor activities as well.

DURABILITY

Reinforcements from all sides and the hard bottom part also enhance the stability and durability. The bottom part has some additional functions as well: it ensures that the bag stays in the same position and prevents it from getting dirty!

SPACIOUS INNER COMPARTMENTS

It features smartly divided compartments that help children organize their school supplies. All size of notebooks and books fit perfectly. Water bottle can be easily packed in side pockets (up to 0.7L).

ROCKY

338-78



I Love Horse



★ She is Cool
★ ★ ★ ★



★ Pinky Star
★ ★ ★ ★



Mandala



★ Little Princess Swan
★ ★ ★ ★



★ Llama
★ ★ ★ ★

ROCKY

338-78



Air Force



Space



Soccer



Dino



Car

SPEEDY

338-35



| | |
|-------------------|-----------------------|
| User age | 6-9 |
| Dimensions | H 40 L 27 T 22 cm |
| Weight | 700-730 g |
| Material | Polyester, waterproof |
| Guarantee | 1 year |
| Volume | 22 L |



Print



Rhinestones



Glitter



Rubber
Badge



TIMETABLE HOLDER & AMPLE
SPACE FOR STORAGE

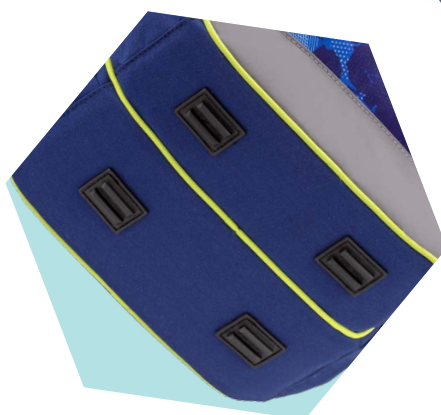
FOR SCHOOL & TRAVEL

"Speedy" weighs only 700-730 g and made of high quality, strong and waterproof materials. This model can be a good choice for school, travel and outdoor activities as well.

DURABILITY

Reinforcements on all sides and four strong buttons on the bottom enhance stability and durability.

UP TO 0.7 L





*" My best friend gave it to me
to always remember her.
She lives far away from me."
(Janka)*



INNER COMPARTMENTS

It features smartly divided compartments that help children organize their school supplies. All size of notebooks and books fit perfectly. Water bottle can be easily packed in side pockets.



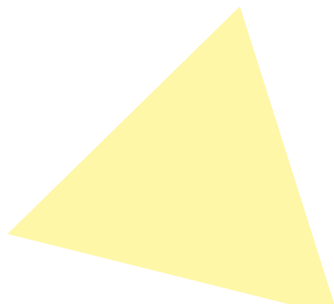
COMFORT

Ergonomic shape and breathable back padding make sure that the pressure on children's back is minimized. Adjustable, cushioned shoulder straps further enhance everyday comfort.



SAFETY

With Belmil school bag safety is guaranteed even if it gets too dark: carefully placed reflective elements on all sides ensure high visibility at night.



SPEEDY

338-35



Ready, Set, Go



Robot



Working



Blue Dino



Brick It



Live for Football

SPEEDY

338-35



My Butterfly



Purple Love



Pinky Owl



Pink Flowers



Cute Kitten



THE SPACIOUS

338-49



User age

7-12

Dimensions

H 41.5 L 26 W 18 cm

Weight

1000-1100 g

Material

Polyester, waterproof

Guarantee

1 year

Volume

21 L



Glitter



Reflective elements



Print



CHEST STRAP FOR
STABILIZING LOAD

UP TO 0,7L



SMARTLY DIVIDED
COMPARTMENTS



SAFETY

With Belmil school bag safety is guaranteed even if it gets too dark: carefully placed reflective elements on all sides ensure high visibility at night.

SMARTLY DIVIDED COMPARTMENTS

It features smartly divided compartments that help children organize their school supplies. All sizes of notebooks and books fit perfectly. Water bottle can be easily packed in side pockets (up to 0,7 L).

COMFORT

Ergonomic shape and breathable back padding make sure that the pressure on children's back is minimized. Chest strap is added for optimal load stabilization. Adjustable, cushioned shoulder straps further enhance everyday comfort.



THE SPACIOUS

338-49

338-49



336-91



335-79

Air 


338-49



336-91



335-79

Captains 

338-49



336-91



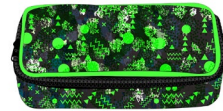
335-79

Gamer 

338-49



336-91



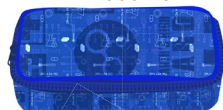
335-79

Geometric


338-49



336-91



335-79

Science 

338-49



336-91



335-79

Time to Win 

THE SPACIOUS

338-49

338-49



336-91



335-79

✿ Tropical Pineapple
★☆☆☆

338-49



336-91



335-79



Tropical

338-49



336-91



335-79



Jeans Lining

338-49



336-91



335-79



Lets Go

338-49



336-91



335-79

✿ Star
★☆☆☆

338-49



336-91



335-79

✿ Flower
★☆☆☆



PACK IT 338-79



User age

11+

Dimensions

H 43 L 27 W 19 cm

Weight

480-505 g

Material

Polyester

Guarantee

1 year

Volume

19 L





UP TO
0,7L



SMARTLY DIVIDED
COMPARTMENTS



SECRET POCKET FOR
PASSPORT AND DOCUMENTS

SECRET POCKET

The back panel features a secret zipper pocket where passport and other documents can be safely stored when on the go.

FOR SCHOOL & TRAVEL

"Pack it" is made of high quality, strong and waterproof materials. This model can be a good choice for school, travel and outdoor activities as well.

SMARTLY DIVIDED COMPARTMENTS

It features smartly divided compartments. All sizes of notebooks and book fit perfectly. There is a padded laptop holder inside. Water bottle can be easily packed in side pockets (up to 0,7 L).



PADDED
LAPTOP HOLDER

PACK IT
338-79



Paradise



Patch Mania



Tropical Flamingo



Say Hello



Floral Butterfly



Sketch

PACK IT

338-79



Exploring



Rock on



Modern mosaic



Give me 5



Graffiti



Camouflage



TRAVEL SET



338-77
Convertible Pack



221
Duffel bag



305-20
Lunch bag



2205
Maxi Duffel bag



CONVERTIBLE PACK 338-77

| | | | |
|-------------------|-------------------|-----------------|-----------------------|
| User age | 6+ | Material | Polyester, waterproof |
| Dimensions | H 41 L 30 W 19 cm | Weight | 860-930 g |
| Volume | 17 L | Size | Cabin bag size* |

*(Check the allowance for each airline)



REMOVABLE TROLLEY
CONSTRUCTION
- SUPER LIGHTWEIGHT
BACKPACK



USE IT AS A TROLLEY BAG
FOR TRAVEL



OR WEAR IT AS
A BACKPACK



PADDED COMPARTMENT
FOR LAPTOP



THE SUPER LIGHT TRAVEL PACK

Thanks to the removable trolley construction, this model is super light weighing only around 860-930 g, thus eliminating unnecessary burden on children's back when is used as backpack. The bag can be easily fastened on the trolley construction with two buckles on the bottom.

SMART COMPARTMENTS

It has 2 large and 2 medium sized compartments. A padded laptop holder provides protection to laptop. Side pockets can accommodate water bottles (up to 0.7 L) and umbrella. Front medium sized pockets are perfect for storing lunch box and pencil case.

MAXI DUFFEL BAG 2205

User age 7+

Material Polyester, waterproof

Dimensions H 27 L 48 W 20 cm

Weight 600-650 g

Volume 23 L

Size Cabin bag size*

*(Check the allowance for each airline)



STORE YOUR SHOES IN
SEPARATE COMPARTMENT
WITH PROPER AIRFLOW

BACKPACK / DUFFEL BAG



SPACIOUS INNER COMPARTMENTS

The largest compartment provides ample space for storing. Besides, there is a smaller inner zipper pocket for safely storing keys or documents. A shoe compartment with mesh on the side ensures proper airflow. On the other side, there is another smaller pocket.

A TRULY VERSATILE DUFFEL BAG

This duffel bag can be worn on the back thanks to the long, padded shoulder straps. Size of the strap can be easily adjusted for comfortable fit. Moreover, it can be also used as a messenger bag.



DUFFEL BAG 221



Age 7+

Material Polyester, waterproof

Dimension H 21 L 38 W 19 cm

Weight 290-340 g

Volume 13 L

Size Cabin bag size*

*(Check the allowance for each airline)

MESSENGER BAG / DUFFEL BAG



REMOVABLE STRAP - TOTAL LENGTH CCA. 1 M



SEPARATE COMPARTMENT
FOR STORING LUNCH BOX
AND WATERBOTTLE



DUFFEL BAG

Belmil Duffel Bag is perfect companion for sport activities and travel. Made of high quality, waterproof materials. It has two separate compartments. The larger one offers plenty room for clothes, towels and other items. The smaller one provides separate storage for shoes. It has two handles and an adjustable and removable shoulder strap.

LUNCH BAG

305-20

Age 6+

Material Polyester, thermo lining

Dimension H 13 L 25 W 15 cm Weight 270-275 g



COMPACT LUNCH BAG FOR SCHOOL,
TRAVEL AND OUTDOOR

THERMO LINING FOR
FRESH FOOD AND DRINKS



REMOVABLE STRAP - TOTAL LENGTH CCA. 1 M



COMPACT LUNCH BAG

This compact Belmil lunch bag is the perfect companion when it comes to keeping food and drinks fresh thanks to its insulated thermo lining. It can be comfortably carried in hands or on shoulders.





TRAVEL SET

338-77



221



2205



305-20



✿ Butterfly Jeans
★ ✿ ★ ✿

338-77



221



2205



305-20



✿ Flower Mania
★ ✿ ★ ✿

TRAVEL SET

338-77



221



2205



305-20



Shine Like a Star
★ ★ ★ ★

338-77



221



2205



305-20



Unicorn Dreams
★ ★ ★ ★

TRAVEL SET

338-77



221



2205



305-20



Pirates 

338-77



221



2205



305-20



Street Racing

TRAVEL SET

338-77



221



2205



305-20



Player

338-77



221



2205

305-20



Shark



MILES BUDDY

338-76



User age

6+

Dimensions

H 45.5 L 33 W 21 cm

Weight

1320-1400 g

Material

Polyester, waterproof

Volume

15 L



Rubber
Badge



Application



Prints



SPACIOUS FRONT POCKET

UP TO 0,7L



REINFORCED BOTTOM AND DURABLE WHEELS



SECRET TELESCOPE



MILES BUDDY - THE EASY TROLLEY BAG

Miles Bag is a perfect companion for travel: light weight, compact and durable. Made of durable wheels, aluminium telescope and reinforced bottom. The telescope offers two height settings: 66 cm and 78 cm, thus fitting children's height.

MILES BUDDY

338-76



✧ Elegant
★ ✧ ✧ ✧



Floral



Horse



Mermaid



MILES BUDDY

338-76



Dino Triceratops



Robotics



Speed Racing



Super Speed





EASY GO 338-45



| | |
|-------------------|----------------------|
| User age | 7+ |
| Dimensions | H 47 L 33 W 20 cm |
| Weight | 1900 g |
| Material | Polyester,waterproof |
| Guarantee | 1 year |
| Volume | 25 L |



USE IT AS A TROLLEY FOR TRAVELING



OR WEAR IT AS A BACKPACK

FUNCTIONALITY AT HIGH LEVEL: 2-IN-1

"Easy go" is designed to be a faithful companion in everyday life. Whether at school, at the gym or during travels, this model will perfectly suit its owner. It can either be used as a trolley, or quickly converted into a backpack. This kind of versatility makes this bag excellent choice for all those active spirits who need to carry around bulky school or sports equipment.



TELESCOPE WITH TWO HEIGHT SETTINGS

REINFORCED BOTTOM WITH SILICON WHEELS



SMARTLY DIVIDED COMPARTMENTS

Large and padded compartments for laptop and all size of notebooks and books. Side pockets can be used for water bottle and umbrella. Inner zipper and mesh pockets allow easy organization of everyday items, such as keys, bus tickets, pens, passport, calculator and notebooks.



DURABILITY

Reinforcements from each side, strong bottom part, high quality handle and silicone wheels are all to enhance the stability and durability. Made of high quality, strong and waterproof materials. Dirt covers on the wheels are added to prevent the wearer from getting dirty when used as backpack.



EASY GO
338-45



Magical



Elegant Flower



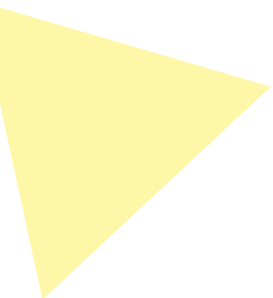
Ballerina



Love to Dance



Tropical Flamingo



EASY GO

338-45



Graffiti



Planets



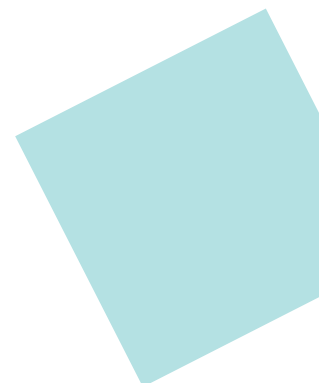
World Map



Shark



Soccer





**MADE IN
EUROPE**



comfort
high quality
best prices
from Europe.



Contact

Address

Belmil Team Ltd.
Svetozara Miletica 36.
24430 Ada, Serbia
Europe

Phone

+381 24 851 109

Email

info@belmil.com

Website

www.belmil.com

[find us on Facebook](#)

comfort
high quality
best prices
from Europe.

